

The logo for Sierra Meadows is centered on a light beige background. It features the word "Sierra" in a dark green, cursive script font, with a horizontal line underneath it. Below the line, the word "MEADOWS" is written in a dark red, all-caps, serif font. The entire text is set within a dark green, irregular, torn-paper-like border.

Sierra
MEADOWS

Sierra Meadows

the best of both worlds...

Our family of professionals at Lemke Homes' shares a passion of developing communities that reflect the beauty of the natural surroundings while providing a commitment to quality built homes backed by our exceptional customer service. We know that building a home begins with a vision and understanding that the most important home we build is the home we build for you and your family.

Lemke Homes welcomes you to visit our newest community, Sierra Meadows. Nestled in the heart of the magnificent oak and pine studded Sierra Foothills conveniently in the historic community of Sonora. This picturesque foothill location offers a multitude of year round recreation and cultural activities at your door step. Pastoral foothill living combined with the modern conveniences of Sonora makes Sierra Meadows truly the best of both worlds.



The Willow

APPROX. 1,405 SQ. FT. • 3 BEDROOMS • 2 BATHS • 2 CAR GARAGE

Elevation A



Elevation B



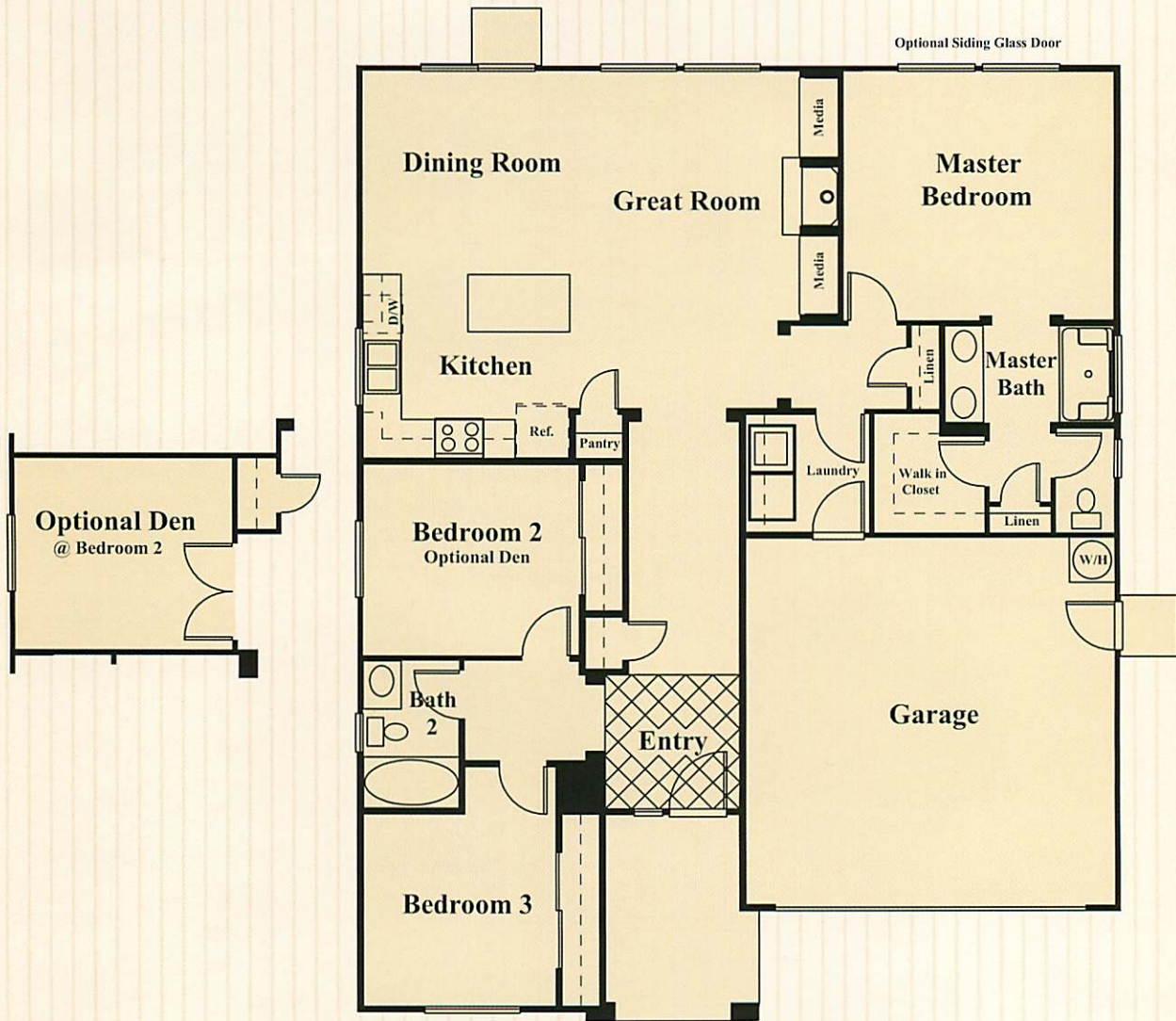
All renderings are artists' concepts
and are subject to change.



Variations in floor plans and elevations may exist
and square footages are approximate.

The Willow

APPROX. 1,405 SQ. FT. • 3 BEDROOMS • 2 BATHS • 2 CAR GARAGE



The Leland

APPROX. 1,437 SQ. FT. • 3 BEDROOMS • 2½ BATHS • 2 CAR GARAGE

Elevation A



Elevation B



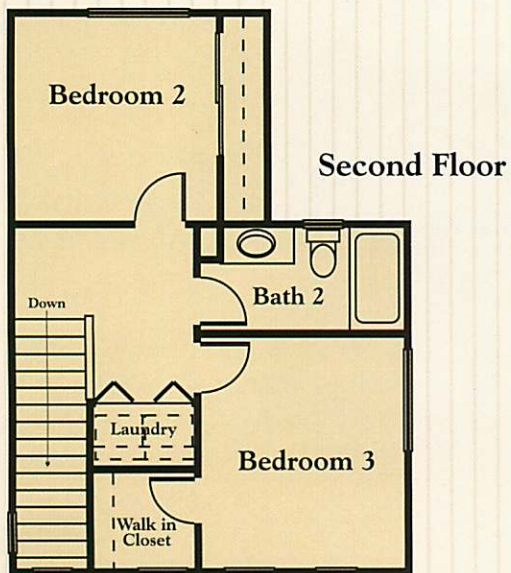
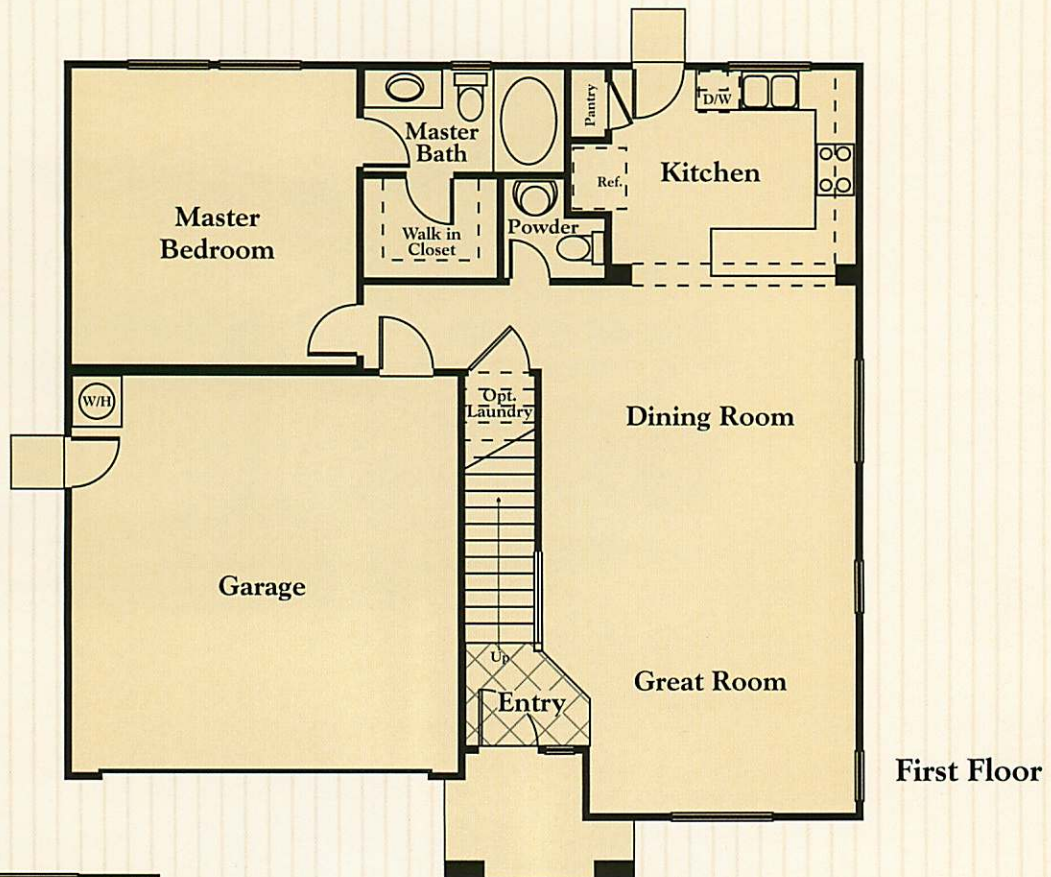
All renderings are artists' concepts
and are subject to change.



Variations in floor plans and elevations may exist
and square footages are approximate.

The Leland

APPROX. 1,437 SQ. FT. • 3 BEDROOMS • 2½ BATHS • 2 CAR GARAGE

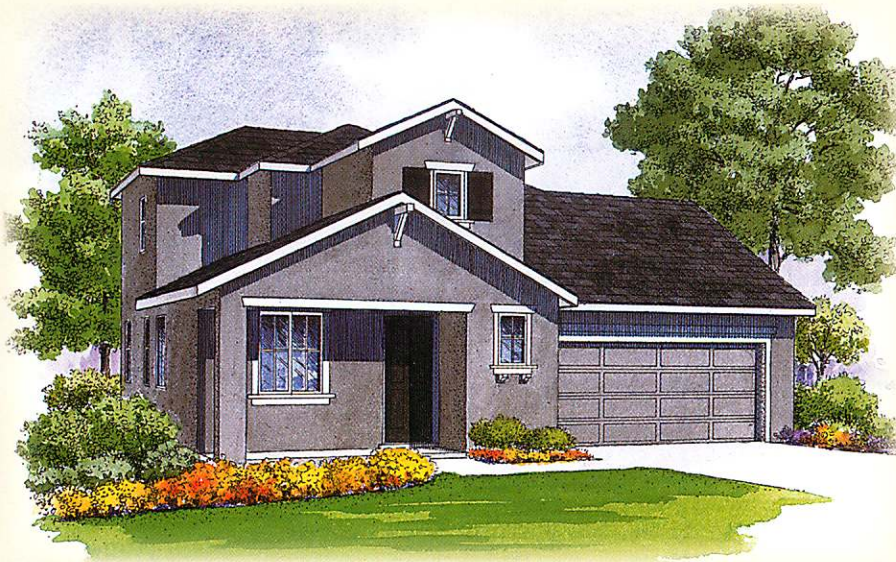


The Montgomery

APPROX. 1,538 SQ. FT. • 3 BEDROOMS • 2½ BATHS • 2 CAR GARAGE



Elevation A



Elevation B

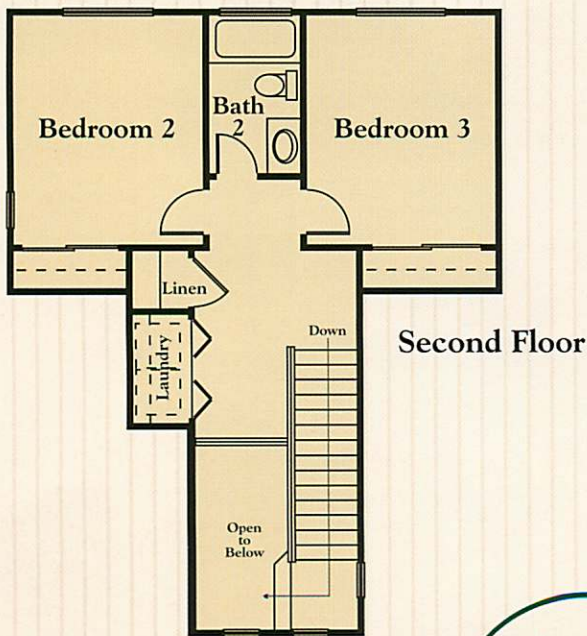
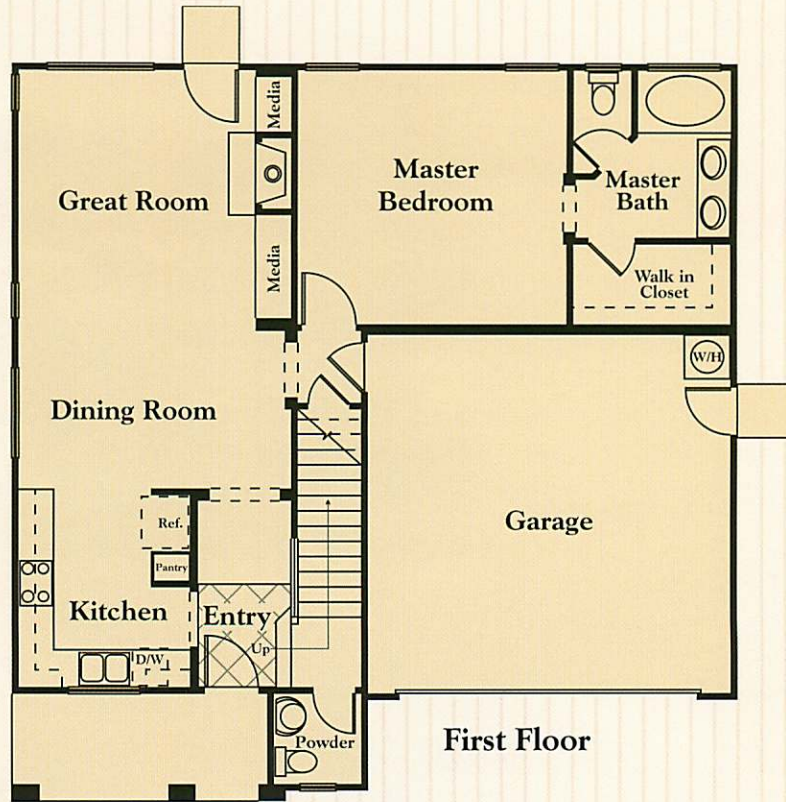
All renderings are artists' concepts
and are subject to change.



Variations in floor plans and elevations may exist
and square footages are approximate.

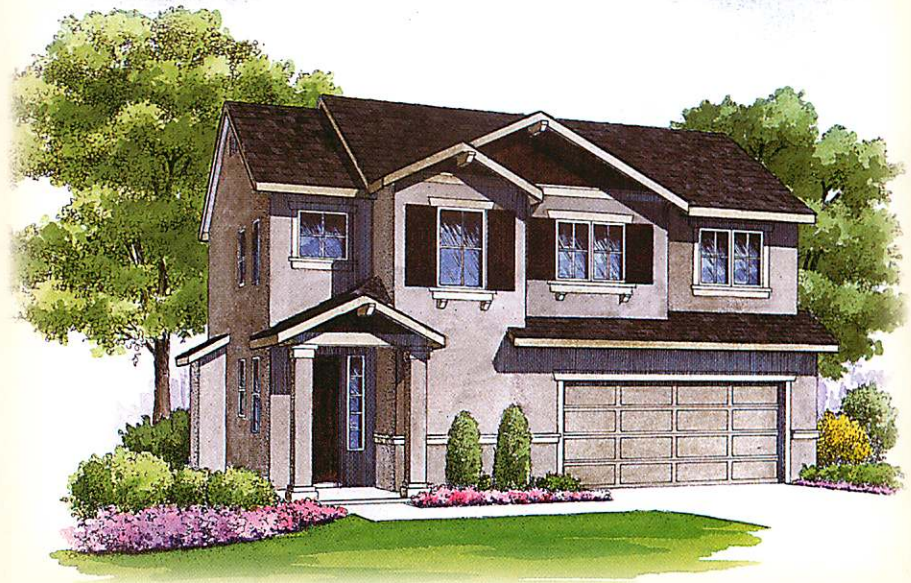
The Montgomery

APPROX. 1,538 SQ. FT. • 3 BEDROOMS • 2½ BATHS • 2 CAR GARAGE



The Thompson

APPROX. 1,758 SQ. FT. • 3 BEDROOMS • 2½ BATHS • 2 CAR GARAGE



Elevation A



Elevation B

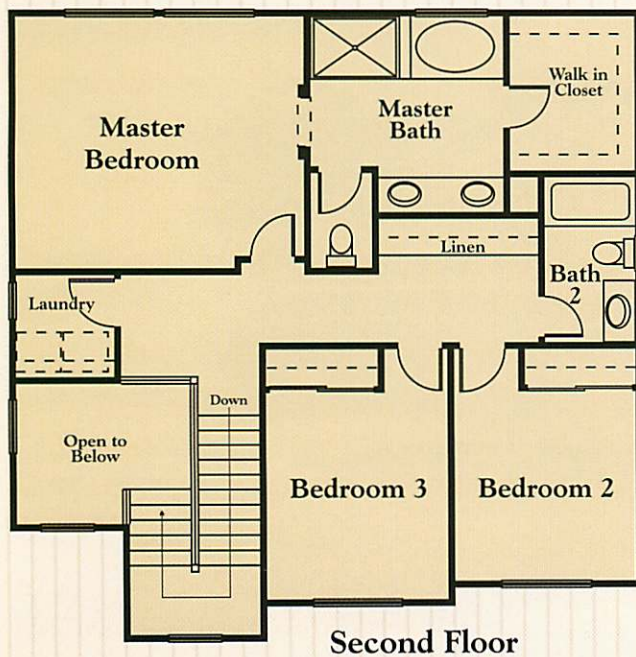
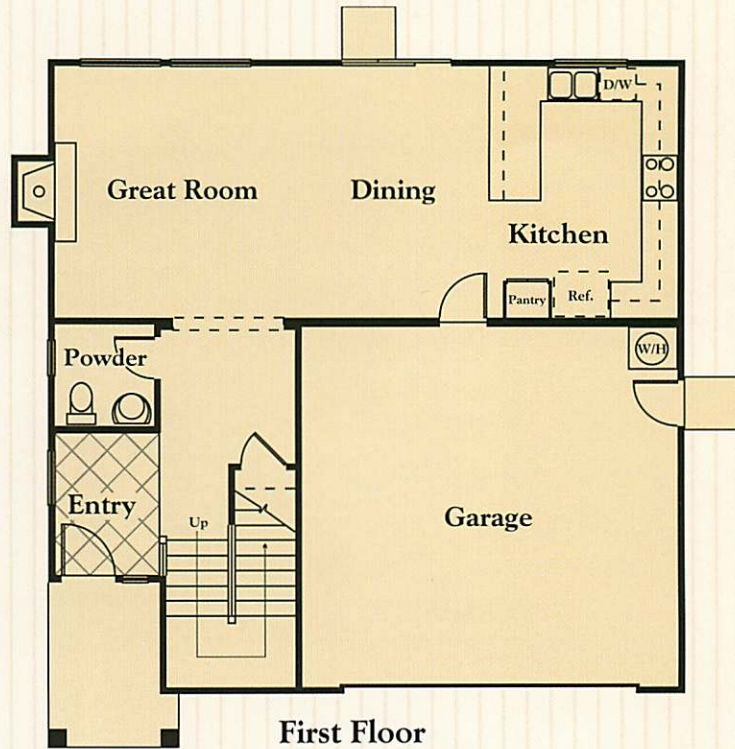
All renderings are artists' concepts
and are subject to change.



Variations in floor plans and elevations may exist
and square footages are approximate.

The Thompson

APPROX. 1,758 SQ. FT. • 3 BEDROOMS • 2½ BATHS • 2 CAR GARAGE



The Kennedy

APPROX. 1,921 SQ. FT. • 3 BEDROOMS • 2½ BATHS • OPT. BEDROOM 4 • 2 CAR GARAGE

Elevation A



Elevation B



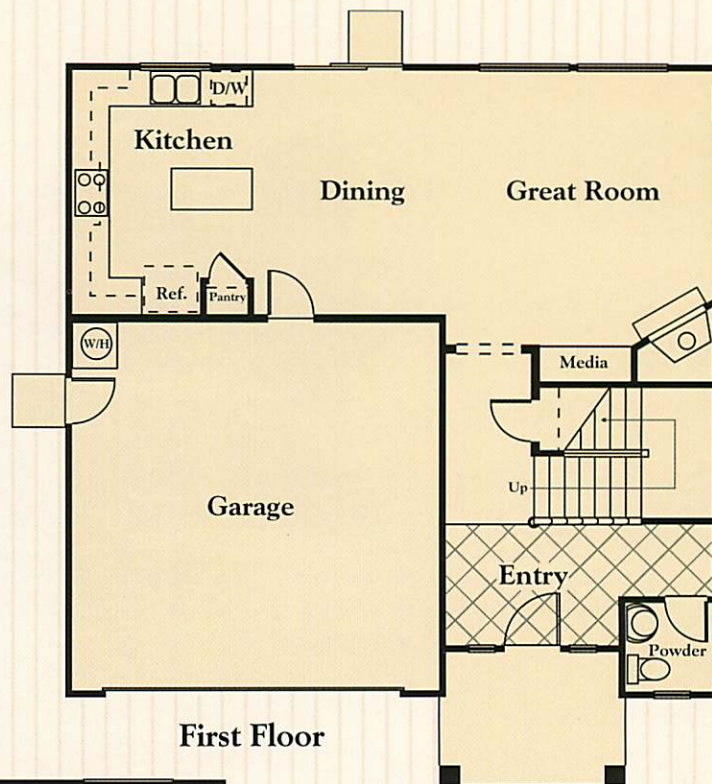
All renderings are artists' concepts
and are subject to change.



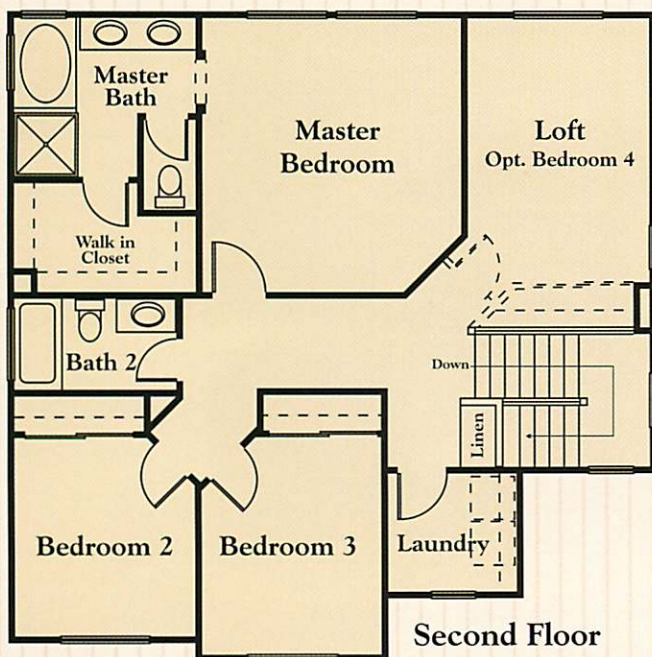
Variations in floor plans and elevations may exist
and square footages are approximate.

The Kennedy

APPROX. 1,921 SQ. FT. • 3 BEDROOMS • 2½ BATHS • OPT. BEDROOM 4 • 2 CAR GARAGE



First Floor



Second Floor

Features

GOURMET KITCHENS

- Custom Oak Cabinetry With European Hinges And White Melamine Interiors
- Hand-set Ceramic Tile Countertop
- Double Compartment Sink
- Whirlpool® Appliances
- Food Waste Disposer
- Refrigerator Space Plumbed For Ice Maker
- Chef's Island And Pantries (Per Plan)

ELEGANT LIVING AREAS

- Hand Set Ceramic Tile Entry
- Architectural Raised Panel Doors And Millwork
- Satin Nickel Door Hardware
- Rounded Interior Wall Corners
- Luxurious Carpeting
- Designer Selected And Recessed Lighting Fixtures
- Decora Rocker Light Switches
- Pre-wired For Ceiling Fans In Master Bedroom And Living Room
- Gas Fireplace With Ceramic Tile Surrounds (Per Plan)
- Convenient Linen Cabinet (Per Plan)
- Media Niches (Per Plan)

LUXURIOUS MASTER SUITES

- Private And First Floor Master Suites (Per Plan)
- Custom Oak Double Vanities With European Hinges And White Melamine Interiors
- Cultured Marble Counters, Tub, And Shower Surrounds (Per Plan)
- Polished Chrome Price Pfister® Plumbing Faucets
- Luxurious Soaking Tubs And Separate Showers (Per Plan)
- Spacious Walk-in Closets

DISTINCTIVE EXTERIOR

- Charming Front Porches
- Craftsman Stucco Exteriors
- Architectural Front Grid Windows
- Eight Foot Tall Raised Panel Entry Door
- Attached Two Car Garages With Roll-up Sectional Steel Garage Doors And Automatic Opener
- Architectural Composition Roofs
- Rear Yard Fencing (Per Plan)
- Professionally Designed Front Yard Landscaping With Automatic Sprinkler System

HOME COMFORT, SAFETY & EFFICIENCY

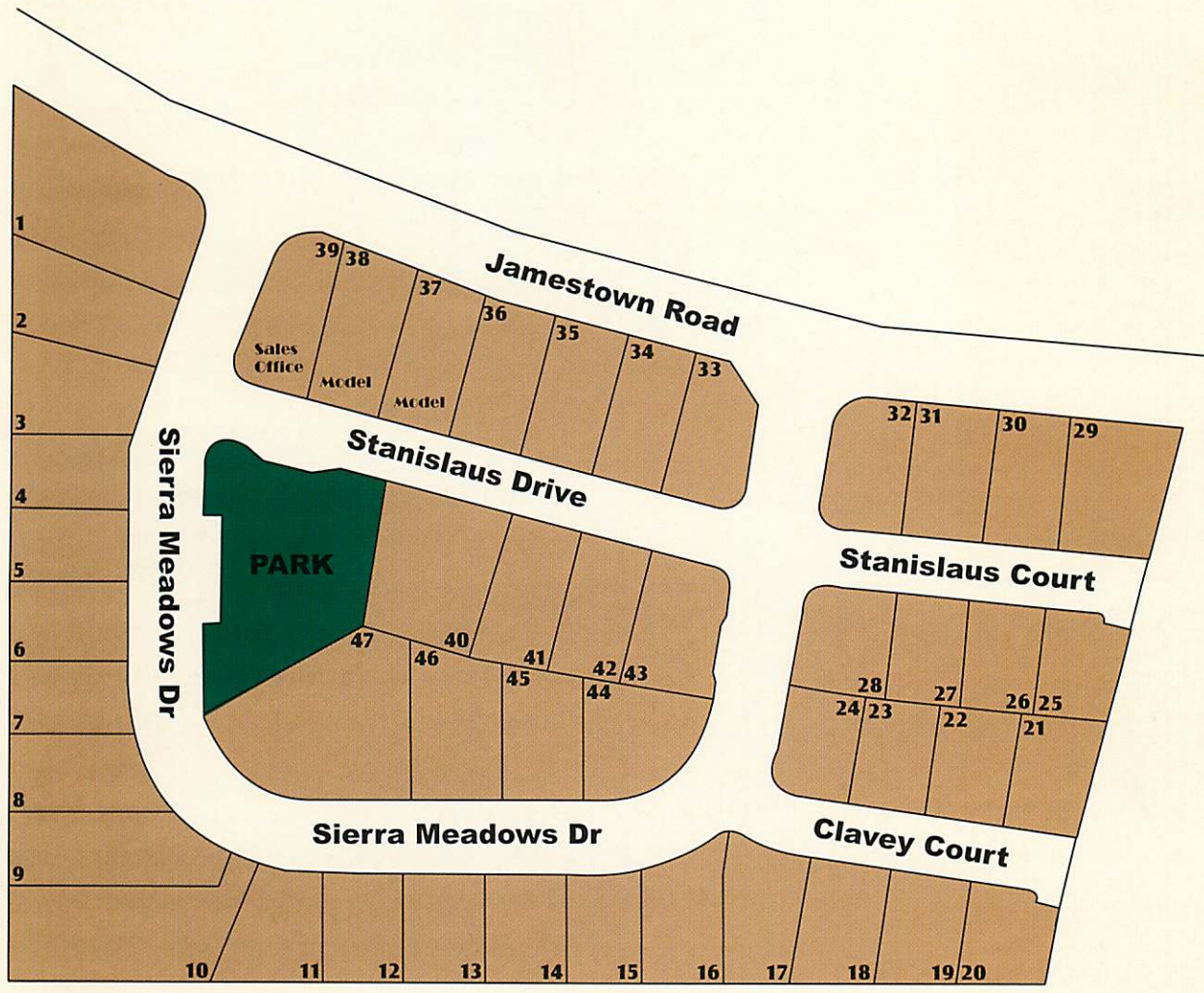
- Energy Efficient Central Air Conditioning And Heating
- Energy Conserving Gas Water Heater
- Interior Laundry Room
- Television Cable Pre-wired In Master Bedroom And Living Room
- Telephone Cable Pre-wired To Master Bedroom And Kitchen
- Dual Glazed Low-E3 Solar Control Vinyl Windows
- Energy Efficient Programmable Set-back Thermostats
- Fully Insulated Ceilings And Exterior Walls
- Water Conserving Water Closets And Shower Heads
- Weather Striping And Caulking At All Exterior Windows And Doors
- Fire Sprinklers, Carbon Monoxide Detectors And Smoke Detectors
- Tested and Verified By A Certified Home Energy Rater

CUSTOMIZING OPTIONS

Please Ask Your Sales Representative For Further Details On Optional Features To Personalize Your New Home.

In an effort to continuously improve our homes, Lemke Homes reserves the right to modify plans, elevations, specifications, materials and price without prior notice or obligation.





SALES OFFICE
 20250 Jamestown Road
 Sonora, CA
 (209) 533-9933
 sales@lemkehomes.com

