

LA COBRE MINA

COPPEROPOLIS

" Beautiful New Homes "



Luxury Single Story Homes
Large Estate Lots
Energy & Water Efficient
Phase One Now Selling

Open Sat/Sun 10am to 5pm
192 Paseo Verde Dr. Copperopolis
www.Miramonthomes.com
(209) 533-9933



**COBRE
MINA
HOMES**

Take the beautiful Lake Tulloch drive on O'Byrnes Ferry Rd to Copper Cove Dr. – Broker Co-Op Welcome.

La Cobre Mina

Exterior

- Beautiful 1 to 2+ acre parcels
- Extra tall carriage garage doors with windows and automatic openers
- Professionally designed front yard landscaping with automatic sprinkler system
- Eagle fire resistant concrete tile roofs
- Front garage coach lights
- 8 Foot tall paneled entry door with brushed nickel door hardware

Interiors

- Ceramic tile entry floors
- Classic millwork with upgraded 5 1/4" baseboards throughout
- Raised panel interior doors with brushed nickel door levers
- Custom coffered ceiling in great room and master
- Two-tone interior paint with designer wall color with contrasting ceiling, doors, and trim.
- Generous windows providing ample natural light
- Prewired ceiling fan in great room

Gourmet Kitchen

- Custom paneled beech cabinetry with concealed european hinges
- Granite slab counters
- Stainless steel undermount sink with gourmet pull-out faucet.
- Ceramic tile kitchen flooring
- Large kitchen islands
- Oversized walk-in pantry, (per plan)
- Whirlpool stainless steel appliances
 - 36" Gas cooktop
 - Luxury Stainless Hood
 - Built in oven and microwave
 - Multi-cycle dishwasher

Private Master Suites

- Large master bedroom with custom coffered ceiling
- Prewired ceiling fan in master bedroom
- Generous walk in closets
- Custom paneled beech cabinetry with marble counters
- Wide spread chrome faucets with "his and her" sinks

- Large oval roman tub and separate shower with marble surrounds
- Clear glass shower enclosures
- Designer bath light fixtures

Secondary Bedrooms & Baths

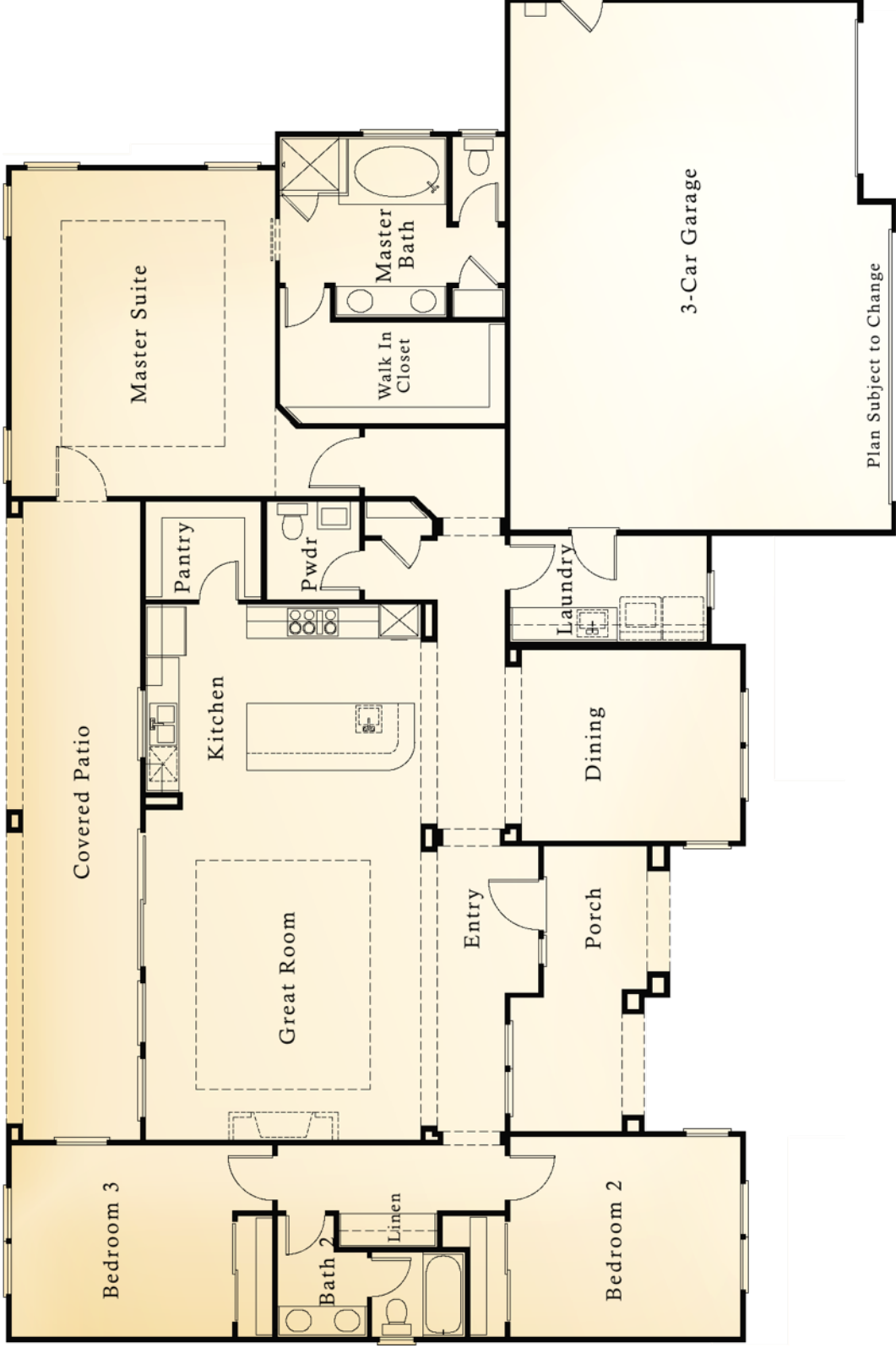
- Generous secondary bedrooms and closets
- Prewired TV outlets in all bedrooms
- Custom paneled beech cabinetry with marble counters
- Double vanity with wide spread chrome faucets
- Separate shower rooms for large family use
- Designer bath light fixtures
- Generous linen storage

Smart Features

- Exceeding Title 24 Energy Requirements
- Photovoltaic solar prepped
- R-38 ceiling insulation and R-15 wall insulation
- Fire suppression system
- Low VOC paint
- Tankless water heaters
- Water efficient plumbing fixtures
- Sealed tight duct system
- 14 SEER air conditioner
- Milgard Suncoat MAX Low-E2 dual paned vinyl windows
- Radiant barrier roof sheathing
- Whole house fan
- RG6 and Cat5 voice and data
- Electronic smoke and carbon monoxide detectors
- Weather sensing irrigation timer
- Third party energy rating inspector
- LED recessed light fixtures
- Occupancy sensor wired baths

Features/Customizing Options

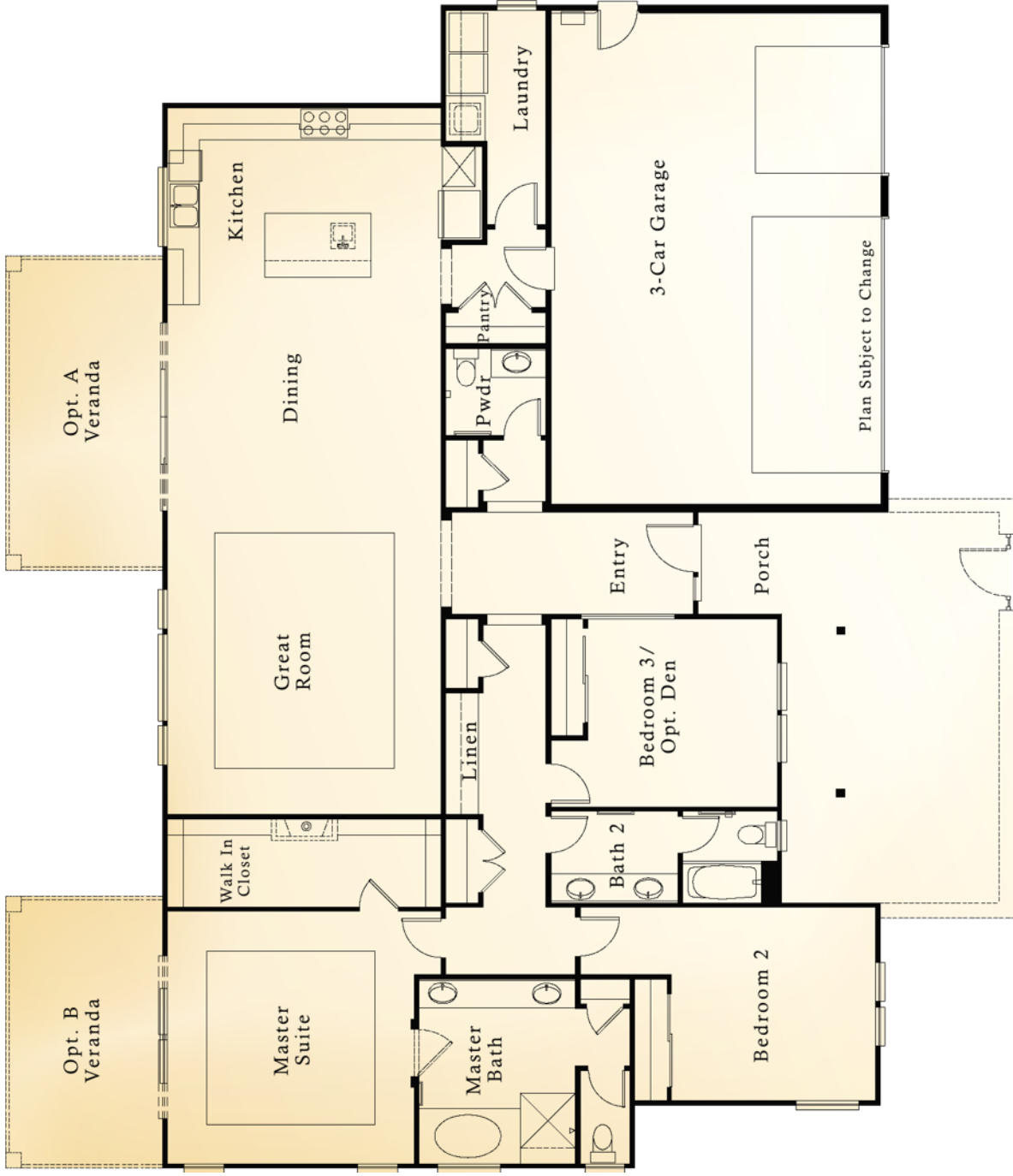
Please ask your sales representative for further details on optional features to personalize your new home. In an effort to continuously improve our homes, Miramont Homes reserves the right to modify plans, elevations, specifications, options, price, terms, and promotions without prior notice or obligation. (LCM060916)



Plan Subject to Change

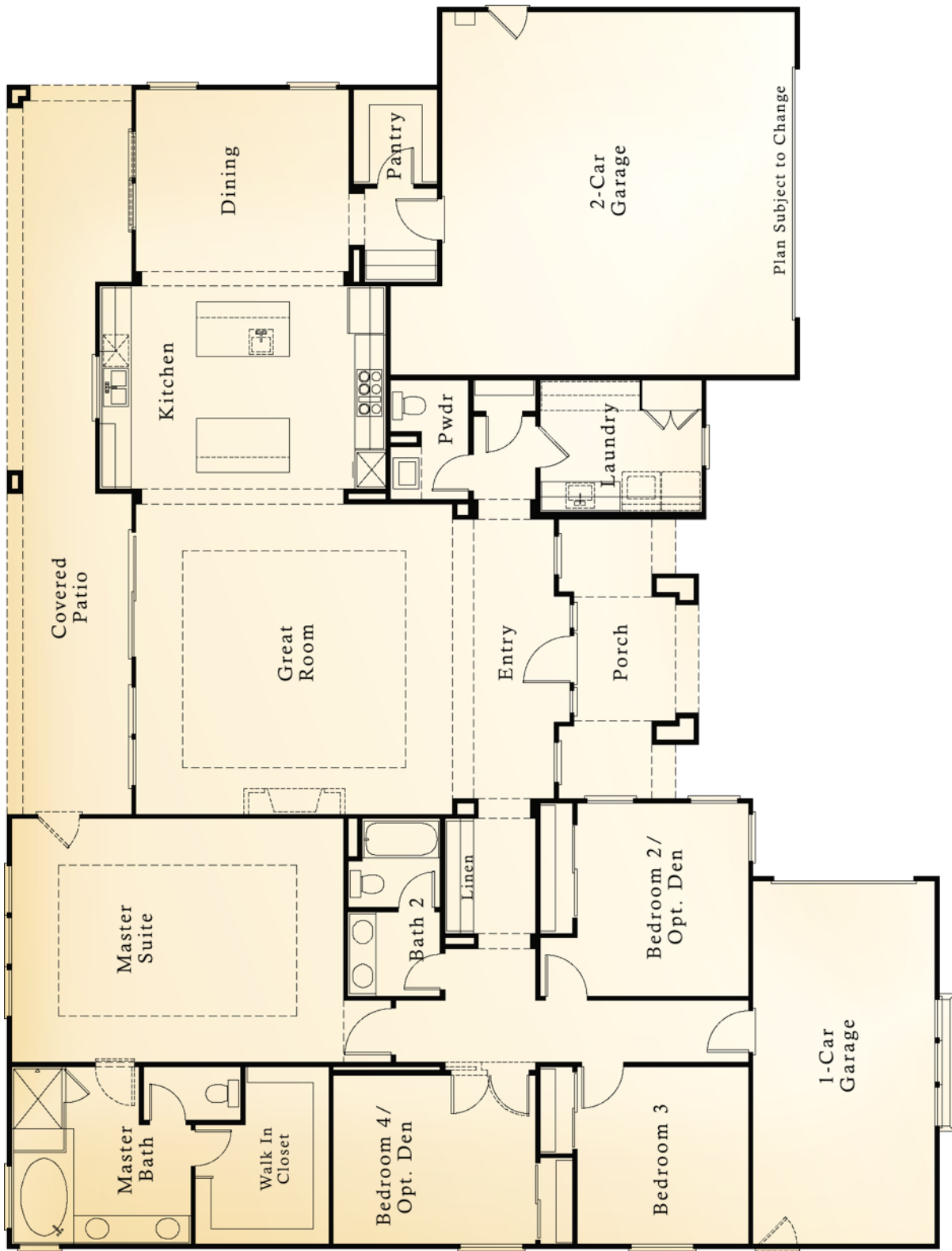
La Cobre Mina - 2,267

Preliminary Subject to Change 6/10/16



La Cobre Mina - 2,340

Preliminary Subject to Change 6/10/16



La Cobre Mina - 2,618

Preliminary Subject to Change 6/10/16



To Angels Camp

Hwy 4

To Stockton

Town Square

Little John Rd

Copper Cove Dr

La Cobre Mina

O'Byrnes Ferry Rd.

Lake Tulloch

Saddle Creek
Country Club

Hwy 108

To Sonora

To Oakdale

La Cobre Mina